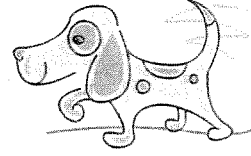
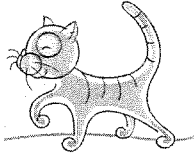


# Countryside Humane Society

## Carnival

Saturday, August 20, 2011

9:00 a.m. to 3:00 p.m.



**Dog Wash • Flea Market • Pet Parade • Raffle • Bake Sale • Door Prizes**

**Come join the fun at the CHS Carnival!!!** We have lots of fun activities planned for the entire family—even your dog! This year's event will feature a dog wash, flea market, pet parade, bake sale, raffle, door prizes, Wizzy's Wieners, Inc. and much more.

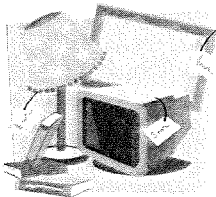
**Dog Wash**—If you missed our annual dog wash at Havahart Pet Shop, this will be a great second chance to get your "dirty" dog washed. Our volunteers will be washing dogs from 9 a.m. to 3 p.m. Your dog will also be able to get his/her nails clipped and be micro-chipped if that hasn't already been done. —Special price \$15!

**CHS Pet Parade**—Are you looking for a new companion? Don't miss Countryside's Pet Parade that will feature the shelter's adoptable dogs. Countryside will be open for viewing other adoptable animals too.

**Flea Market**— This is a great opportunity to "clean house". Sell those un-used or no longer needed items! Participants must supply their own tables, chairs, and tents, (or umbrellas). No electricity is available. Participants will be responsible for cleaning their area at the close of the flea market day. The fee is \$25 for a 10ft x 10ft space —SAVE \$10 when you rent two! Space is available on a first-come, basis. Set up time is 7:00 a.m. If you are interested in renting a booth, please complete the form below. **Deadline is July 25, 2011.**

For more information, PLEASE contact Nancy at 262-554-6699 Ext. 700 or email:  
[nancy@countrysidehumanesociety.org](mailto:nancy@countrysidehumanesociety.org)

Complete the form below. Mail with your check made payable to: Countryside Humane Society, 2706 Chicory Rd., Racine, WI 53403



### Flea Market Form

Countryside's Flea Market  
Saturday, August 20, 2011 (9am – 3pm)  
Setup at 7am  
2706 Chicory Rd. – Racine, WI 53403



Name: \_\_\_\_\_

Phone: (\_\_\_\_) \_\_\_\_\_

Address \_\_\_\_\_

Cell: (\_\_\_\_) \_\_\_\_\_

City/State/Zip: \_\_\_\_\_

Email: \_\_\_\_\_

(Please print clearly)

10'x10' Booth \$25.00

(2) 10'x10' Booths \$40.00

ENCLOSED is my check for: \$ \_\_\_\_\_

Countryside Humane Society, Inc. • 2706 Chicory Rd. • Racine, WI 53403 • (262) 554-6699  
[www.countrysidehumanesociety.org](http://www.countrysidehumanesociety.org)

